



Eagles Landing Sales Office

10 Eagles Landing Drive

Shiloh, IL 62221

Phone: 618-624-9653

Fax: 618-624-0179

VS1805: Located in Shiloh, IL.

1,805 Square Feet, 2 Story, 4 Bedroom, 2.5 Bath, Base Price \$180,500



Elevation A



Elevation B



Elevation C



Elevation D



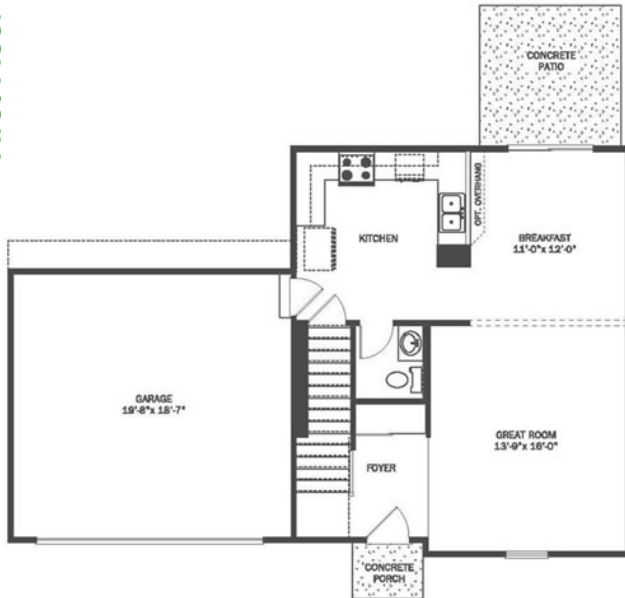
Elevation E



Elevation F



First Floor



Second Floor



Artist's conceptual rendering. Actual construction may vary. Side entry garages, dormers, fireplaces, bay windows, sunburst garage windows, transoms, window grills some windows, porch railings, brick front porches, raised foundations, and wing walls shown on front elevations are optional. Room size dimensions shown are approximate. Due to evolutionary changes in our design improvement process, we reserve the right to substitute materials of comparable quality.

